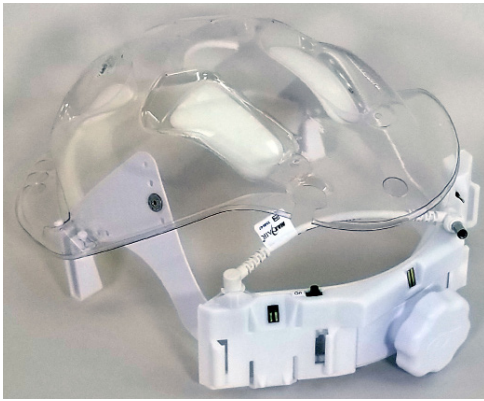




CAUTION

Before use, thoroughly read MAXAIR® CAPR® P/N 03521015 User Instruction (received with all CAPR Helmets and available at www.maxair-systems.com).



REF 2071-10

P/N 01532089

Intended Use

The MAXAIR 2071-10 Liner provides a soft interface, suspension, and fit adjustments for a MAXAIR Helmet to the head.

The 2071-10 Liner is **specifically for use with the 2561-01 Helmet Battery**, however, it may be used with any MAXAIR Battery configuration.

Specifications

Recommended System Temperature Limits

Use/Handling: 0°C to 54°C at a maximum 80% Relative Humidity.

Charging: 0°C to 45°C at a maximum 80% Relative Humidity.

Storage: 0°C to 35°C at a maximum 80% Relative Humidity.

Material

Polycarbonate

Regulatory

NIOSH

Symbol Definitions



Warning, Caution, or Note



Catalog Number



NIOSH Number



WARNING

Failure to follow User Instructions P/N 03521015 and the instructions contained herein may be hazardous to the user's health.

Use only if package is received unopened and contents are undamaged. If damage is noted, contact the shipper for replacement or repair.

Prior to using any MAXAIR® System or component, be sure to be familiar with the system's NIOSH approved configuration.

DO NOT use if any component is damaged. If any components are damaged or contaminated and therefore unfit for safe and effective use, they should be replaced immediately.

Only trained and experienced personnel who have read and understand the User Instructions should use MAXAIR Products.

The institution using this product in any application is responsible for determining the appropriateness of this equipment relative to regulatory requirements. Bio-Medical Devices Intl, Inc. does not recommend the appropriate systems for a particular institution or facility.

Use only MAXAIR Systems/ NIOSH approved compatible components.

NOT for use in atmospheres immediately dangerous to life or health (IDLH), and atmospheres containing less than 19.5% oxygen, or more than 25% oxygen.

Flammability Level I: Material may burn if exposed to open flame.

Follow current local regulations governing biohazard waste to safely dispose of single use MAXAIR Products.

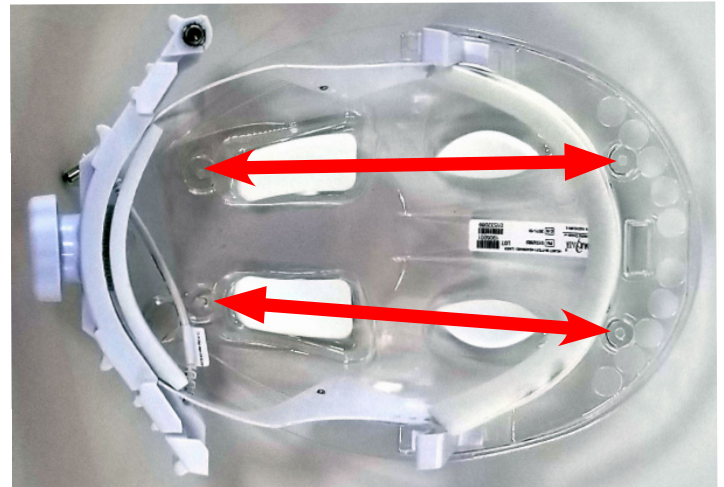
If you need more information, contact your BMDI Sales Representative, or call BMDI customer service at 1-800-443-3842.

Liner to Helmet



NOTE

The Liner four attachment holes (red arrows) attach to the four Helmet Mounting Snaps.



Assembly - Liner to Helmet



1. Place Liner front (green arrow) under Helmet front (red arrow) to align Helmet Snaps with Liner Snap Holes.



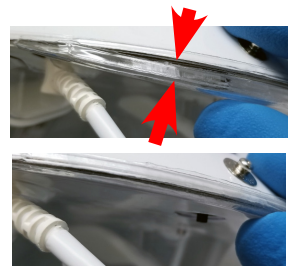
2. Press Liner front right and left Snap Holes down and over Helmet front right and left snaps until secure.



3. Align the Liner Power Cord's notch with the Helmet Cord Connector indent; press the Cord Connector fully in, then turn to secure.



4. Press the Liner rear right and left Snap Holes over the Helmet rear right and left Snaps until secure.



5. Ensure the Liner outer edges curl up and over the Helmet bottom edge, all around the Helmet.

Disassembly - Liner from Helmet



1. Ensure the Power Cord Connector notch is aligned with the Helmet Cord Connector indent, grasp the Cord Connector out and away from the Helmet.



2. Grasp the front of the Liner along the top of the front Headband with the fingers.



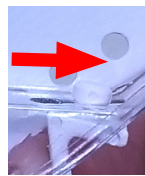
3. With thumb against bottom front of Helmet, pull fingers down and push thumb up to disengage Front Snaps.



4. Continue pulling Liner down and away from Helmet until Rear Snaps disengage.

Liner Side Tabs

Disassemble Liner Side Tabs



1. Push Rear Button backward and pull down to remove from rear slot.



2. Push Front Button inward and pull down to remove from front slot.



3. Side Tab removed from Liner. Repeat on other side.

Assemble Liner Side Tabs

1. Insert Side Tab Rear Button into Rear Side Tab slot from underneath, then push all the way forward.



2. Insert Side Tab Front Button into Front Side Tab slot from inside, then push all the way forward (outward).



3. Properly installed Side Tab. Repeat for other side.

